

PLUGANDPLAY

SU SUMMIT

FIELD TO FARMGATE INNOVATION

#PNPTCSiliconValley

Join us at pnptc.com

AGENDA

- 10:30** **Welcome**
- 10:35** **Keynote— Bridging the Gap: How Physical AI Is Powering the Next Wave of On-Farm Innovation**
- 11:00** **Panel 1: Ground Truth—The Grower’s Perspective**
- 11:25** **Panel 2: Corporate Venture Capital in Ag**
- 12:00** **Closing Remarks**

PLUGANDPLAY

SU SUMMIT



KEYNOTE SPEAKER

Tim Bucher

President and Founder, *Trattore Farms
and Winery*

CEO and Co-Founder, *Agtonomy*

#PNPTCSiliconValley

Join us at pnptc.com

A decorative graphic consisting of two dashed lines that curve upwards and outwards from the center. Each line ends in a circular target-like symbol with concentric rings. The background is dark with a white horizontal line near the bottom.

Forget self-driving cars; the future is

PHYSICAL AI

in industrial markets

BILLIONS SPENT

MOBILITY

Reality check: \$160 billion can't get autonomous vehicles on road

By Jerry Hirsch November 04, 2022 07:48 AM

Self-Driving Investment Crash: 58% Drop In Autonomous Vehicle Dollars

By [John Koetsier](#), Senior Contributor. © Journalist, analyst, author, podcaster.

Follow Author

Published Apr 19, 2023, 06:00pm EDT



U.S. agriculture industry faces labor shortage of 155,000 employees

BY JEFF VAN SANT | TAMPA
PUBLISHED 6:30 PM ET AUG. 24, 2025

Ag News

Farmers Launch New Campaign to Highlight Growing Crisis of Labor Shortages for U.S. Agriculture

News Release Posted: October 24, 2025

North Country farms are caught between labor shortages and visa limits

BY DAVID ESCOBAR (REPORT FOR AMERICA CORPS REPORTER)

Oct 06, 2025

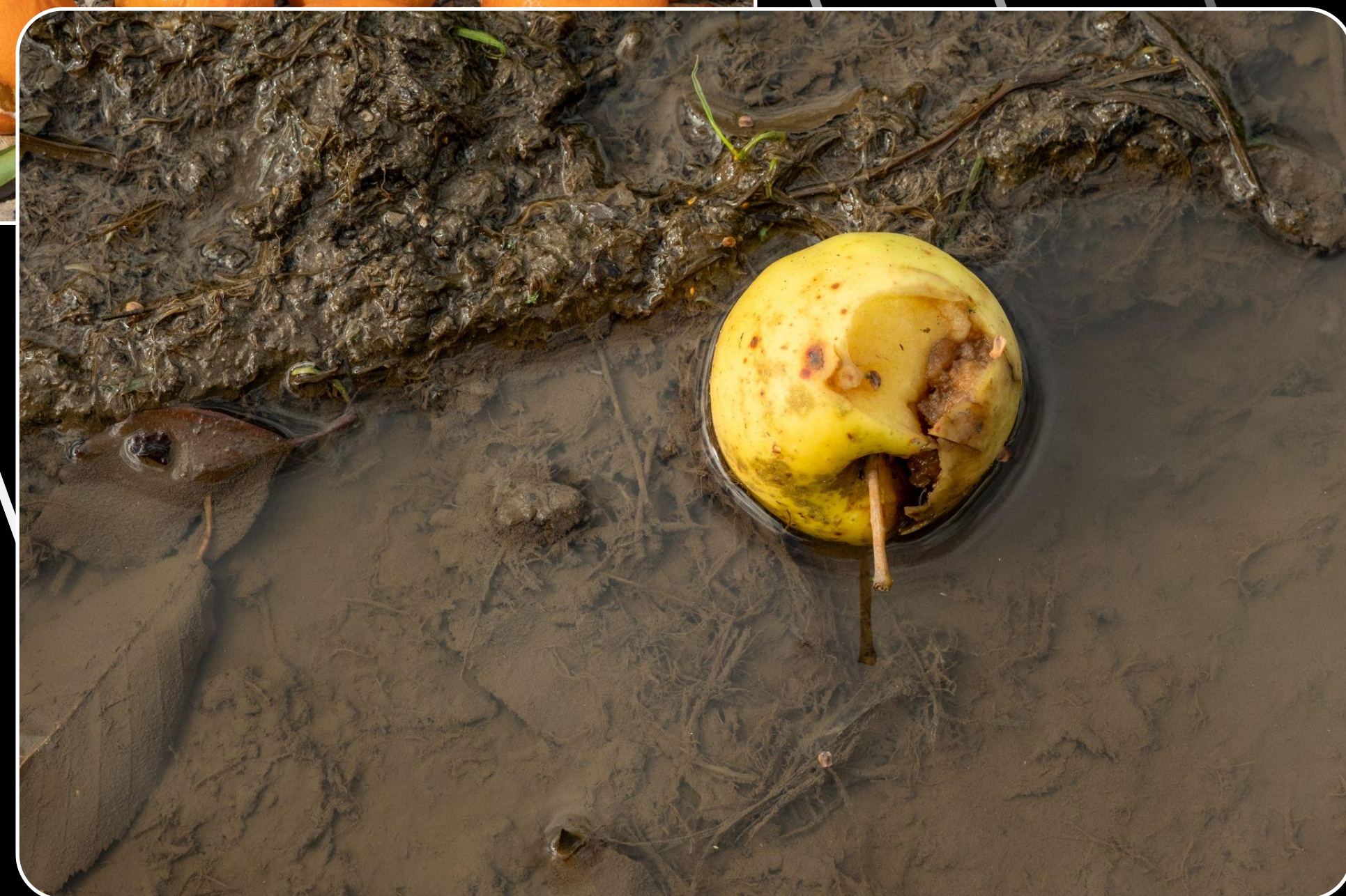
chasing convenience

THE REAL WORLD

is waiting



not
enough
HANDS

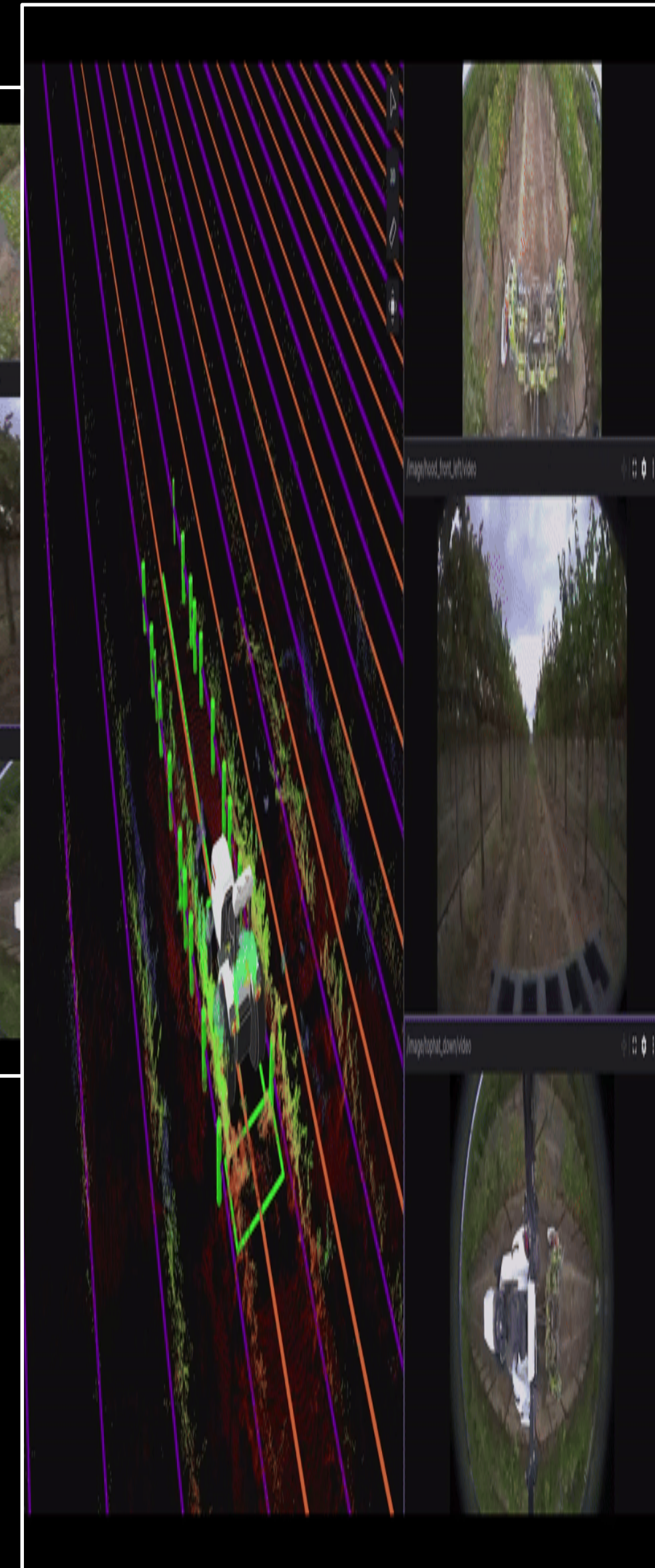
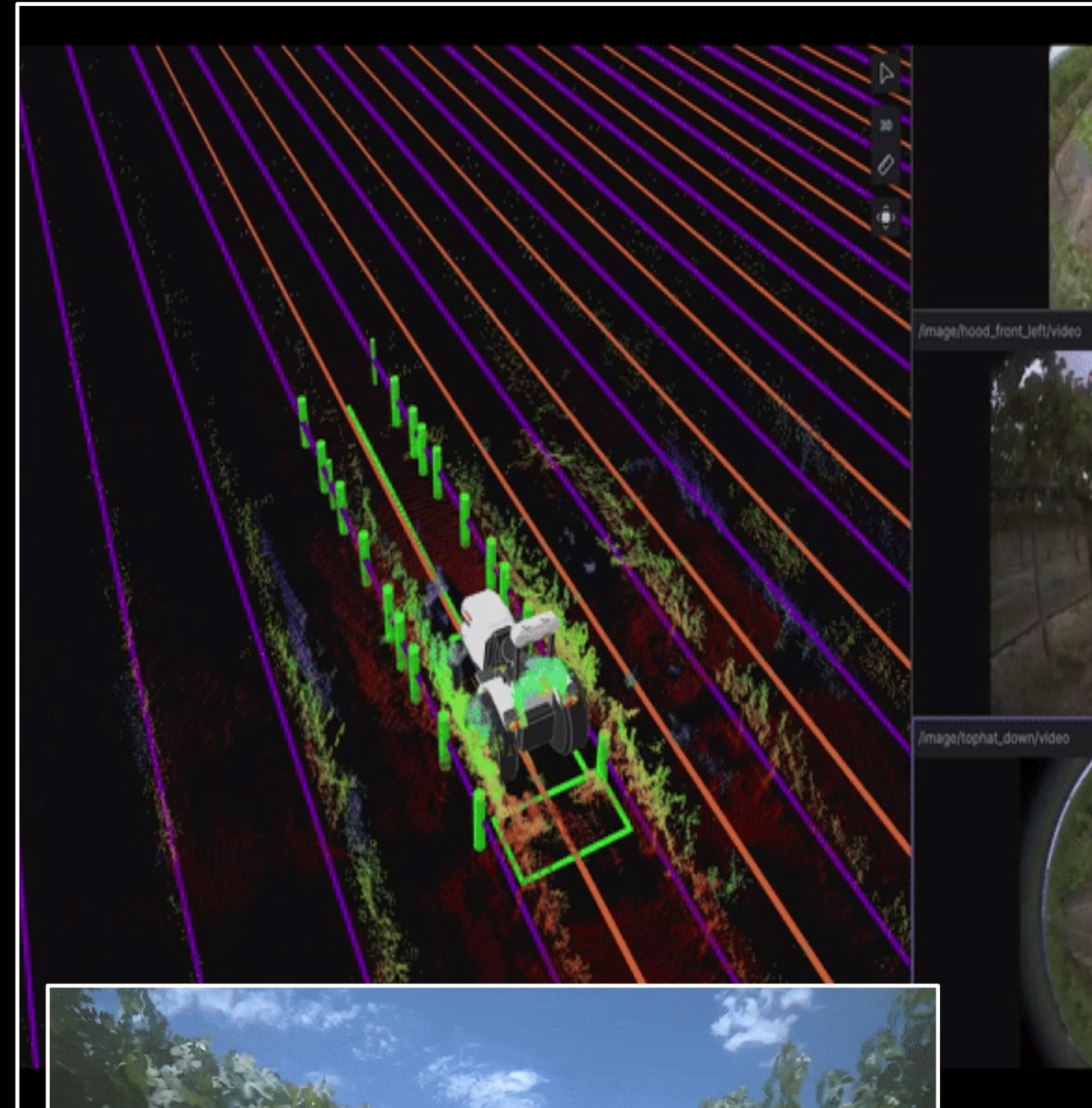


AI DOES



REAL WORK

WHAT IS PHYSICAL AI?



AI THAT WORKS the land





POWERING the economy



STRONG MACHINES need brains

PARTNERSHIPS

are power



+



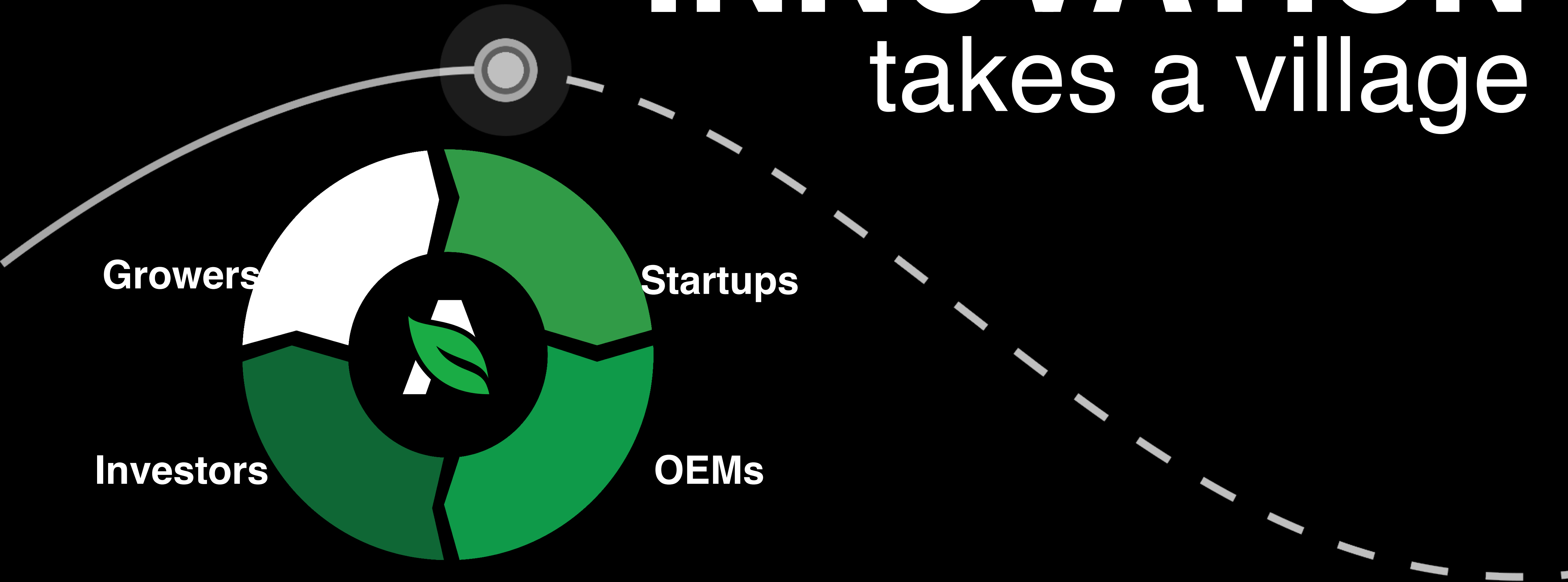
Manufacturing

Dealer Network

Financing

Physical AI

INNOVATION takes a village



ALREADY IN the field



SMARTER SAFER SIMPLER



704 Bobcat CT4045 Interrupted 75%

Difficult Terrain 98%

Dispatch Help
Skip Work Area
Bypass Obstacle
Stop Task

0.0 MPH 0 PTO Rear Lights

Job Interrupted Now

Suspected object blocking the path of vehicle 106 in Block 12A, Row 4 and is preventing it from continuing Task KVM1432-02.



9:41

711 Bobcat CT4045 Interrupted 75%

Details Health Settings

Stopped: Obstacle Detected
path blocked, unable to route around obstacle

Bucket 100%

hh:mm:ss

Front Camera

Slide to Bypass >>

Fleet Work

THE ERA OF AI



IS HERE



**THE FUTURE
IS PHYSICAL AI**

PANEL: GROUND TRUTH—THE GROWER'S PERSPECTIVE



MODERATOR

Gabrielle Basuki

Corporate Partnerships
Associate, Food
Plug and Play Tech Center



Walt Duflock

Senior VP of AgTech Innovation
Western Growers



Kate Fuso

Director of Membership &
Partnerships
California Farm Bureau



Michael Miiller

Director of Gov. Relations
*California Association of
Winegrape Growers*

PANEL: CORPORATE VENTURE CAPITAL IN AG



Mark McAllister

Ventures Associate
Plug and Play Tech Center



PJ Amini

Sr. Director, Venture
Investments
Leaps by Bayer



Matt Foley

Senior Associate
Bidra Innovation Ventures



Jason Gabriel

Managing Director
Syngenta Group Ventures



Matt Hoffman

General Partner
Reservoir

#PNPTCSiliconValley

Join us at pnptc.com